

3D planograms with power features and the best visuals

Successfully planning the placement of your products in the retail space is a major factor to increasing your sales.

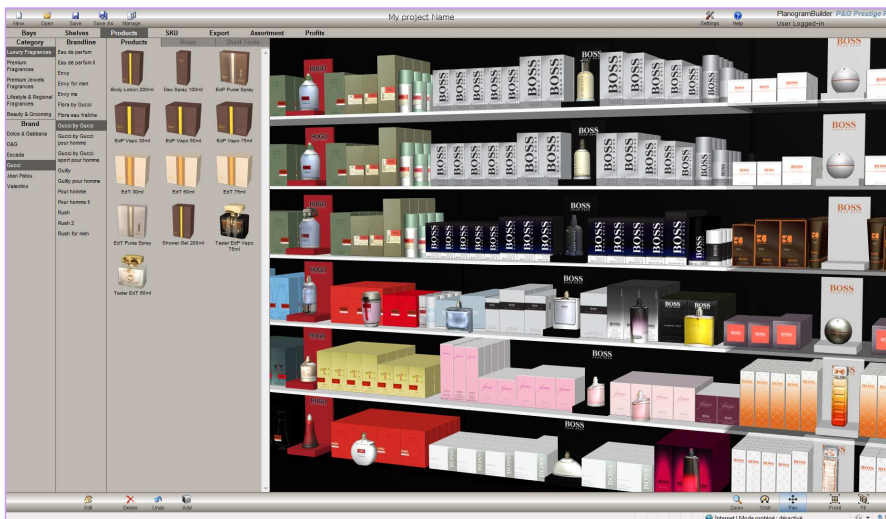
PlanogramBuilder makes this task easier thanks to its online 3D environment accessible worldwide where you can design, evaluate, optimize and communicate your ideal space planning with all your products always up-to-date.

PlanogramBuilder provides top-class visualization of your products and facings. Reports, schematic views and high resolution images can be published for your sales team and your clients as guidelines for store implementation.

All users have access the latest software version through a secured login. They can create, manage and share their planogram projects from any Web connected PC.

Your products, POS, shelving and advertising material are stored in a common online database and classified to match your business practice.

The intuitive user interface combined with powerful editing and analysis features enhances your productivity today, while the underlying leading-edge Web technology ensures the flexibility to cover your future needs.



Competitive advantage

- Easy setup and compatibility on any Windows PC
- Best-of-class visual quality 3D planograms
- Very intuitive use and fast learning curve
- Unified Internet product database for all users
- Quick online products and software updates
- High resolution images output ready for print
- State-of-the-art technology and architecture

"Looking for an innovative, intuitive and seamless solution to contribute to our Category Management strategy worldwide, we selected zVisual to develop a customized 3D planogram builder based on our vision and the zVisual Builder software suite.

The application was rapidly and successfully deployed. Its worldwide acceptance has led other categories to evaluate or adopt it."

*Yann Galina, Global Retail Marketing,
Procter & Gamble Prestige Products*



Features

Deployment and Infrastructure

- Subscription-based web-connected application for Windows PC's
- Quick and simple setup and updates at no extra cost
- Unlimited number of users with various access rights
- Metric and imperial units; English, French and Spanish interface
- Common cloud-based product database for all co-workers
- Collaborative features (project sharing, multi-user templates)
- User guide, email and phone support included with license

Planogram Creation

- User-friendly interactive Drag&drop operation
- Interactive real-time 2D and 3D planogramming
- Representation of products, POS and objects of any shape
- Adjustable fixtures (shelves, panels, slat walls, pegboard, etc.)
- Intelligent physical constraints such as snaps and collisions
- Specific placement rules for POS, shelf strips, dividers, etc.
- Products classified by category, brand, type, etc. with thumbnails

Business Intelligence

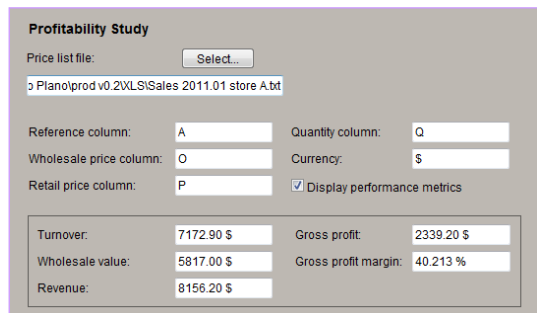
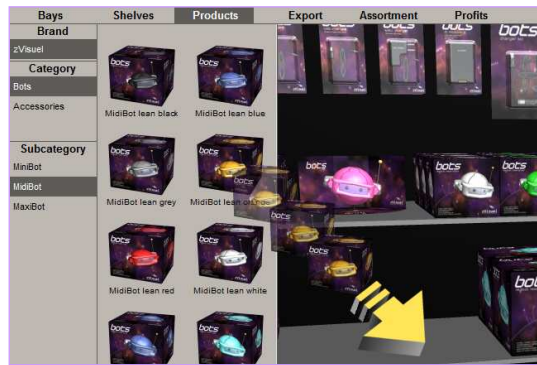
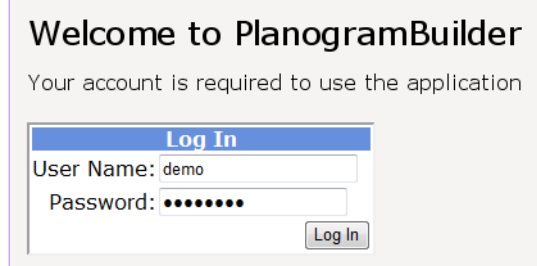
- Assortment suggestion based on your sales figures
- Real-time display of value and margin for items on shelf
- Projection of turnover and margin based on sales statistics
- Calculation of linear, surface and volume of products on shelf
- Schematic view with color coding for quick analysis

Viewing and Publishing

- Planogram reports in MS Office and Web compatible format
- Customizable product listings (choice of properties to list)
- Page layout, color and font options for reports
- High resolution images output ready for printing up to poster size
- 3D stereo viewing with anaglyph glasses

Content Management

- Built-in database editor to add and manage your products seamlessly
- Product classification, code, name, dimensions and custom properties
- Batch importing of products from spreadsheets and images
- Product and POS database local back-up and restore
- Planogram projects repository with title, date, user, etc.



1	A	B	C	D	E	F	G	H	I	J	K
2	Reference	Brand	Description	Quantity	Quantity Rank	Revenue	Revenue Rank	Revenue (% aggregate)	Revenue (% aggregate)	Cumulated revenue	Cumulated revenue (% aggregate)
3	z.01.01.02.05	zVisual	MiniBot mean yellow	1	28	9.72%	1	837.2	9.72%	837.2	10.72%
4	z.01.01.01.10	zVisual	MiniBot lean pink	2	25	8.68%	2	747.5	8.68%	1584.7	19.40%
5	z.01.01.01.05	zVisual	MiniBot lean yellow	3	22	7.64%	3	667.8	7.64%	2252.5	28.04%
6	z.01.01.02.01	zVisual	MiniBot mean grey	4	17	5.90%	4	508.3	5.90%	2760.8	33.94%
7	z.01.01.01.02	zVisual	MiniBot lean blue	5	16	5.58%	5	479.4	5.58%	3240.2	37.59%
8	z.01.01.01.08	zVisual	MiniBot lean orange	6	15	5.27%	6	448.5	5.27%	3688.7	42.71%
9	z.01.01.01.03	zVisual	MiniBot lean grey	7	14	4.88%	7	418.5	4.88%	4100.2	47.82%
10	z.01.01.01.06	zVisual	MiniBot lean green	8	14	4.88%	8	418.5	4.88%	4518.7	52.44%
11	z.01.01.02.04	zVisual	MiniBot mean purple	9	13	4.51%	9	388.7	4.51%	4907.4	59.84%
12	z.01.01.02.11	zVisual	MiniBot mean cyan	10	13	4.51%	10	388.7	4.51%	5296.2	61.48%
13	z.01.01.01.07	zVisual	MiniBot lean black	11	12	4.17%	11	358.8	4.17%	5655.1	69.62%
14	z.01.01.02.10	zVisual	MiniBot mean pink	12	12	4.17%	12	358.8	4.17%	6013.9	73.79%
15	z.01.01.02.09	zVisual	MiniBot mean pink	13	11	3.82%	13	328.9	3.82%	6342.8	77.61%
16	z.01.01.01.03	zVisual	MiniBot lean red	14	10	3.47%	14	299	3.47%	6641.8	77.88%
17	z.01.02.02.09	zVisual	MiniBot mean blue	15	10	3.47%	15	299	3.47%	6940.8	80.59%
18	z.01.01.02.02	zVisual	MiniBot mean blue	16	9	3.13%	16	269.1	3.13%	7209.9	83.69%
19	z.01.01.01.04	zVisual	MiniBot lean purple	17	8	2.78%	17	239.2	2.78%	7449.1	86.48%
20	z.01.01.01.09	zVisual	MiniBot lean white	18	8	2.78%	18	239.2	2.78%	7688.3	89.24%
21	z.01.01.02.07	zVisual	MiniBot mean black	19	8	2.78%	19	239.2	2.78%	7927.5	92.01%
22	z.01.01.02.08	zVisual	MiniBot mean white	20	7	2.43%	20	209.3	2.43%	8136.8	94.44%
23	z.01.01.02.06	zVisual	MiniBot mean green	21	6	2.08%	21	179.4	2.08%	8316.2	96.53%
24	z.01.01.01.11	zVisual	MiniBot lean cyan	22	5	1.74%	22	149.5	1.74%	8465.7	97.29%
25	z.01.01.01.08	zVisual	MiniBot lean white	23	3	1.04%	23	89.7	1.04%	8555.4	99.31%

